



GAT MONTHLY MEMBERSHIP PROGRESS REPORT

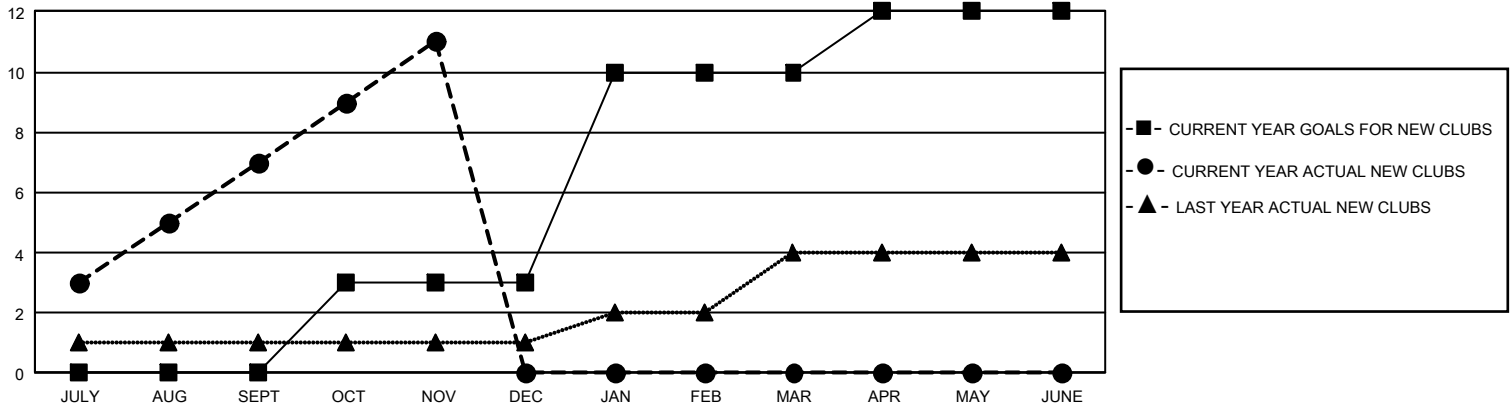
Results as of: 11/30/2025

GMT Constitutional Area 5 - J, Group H

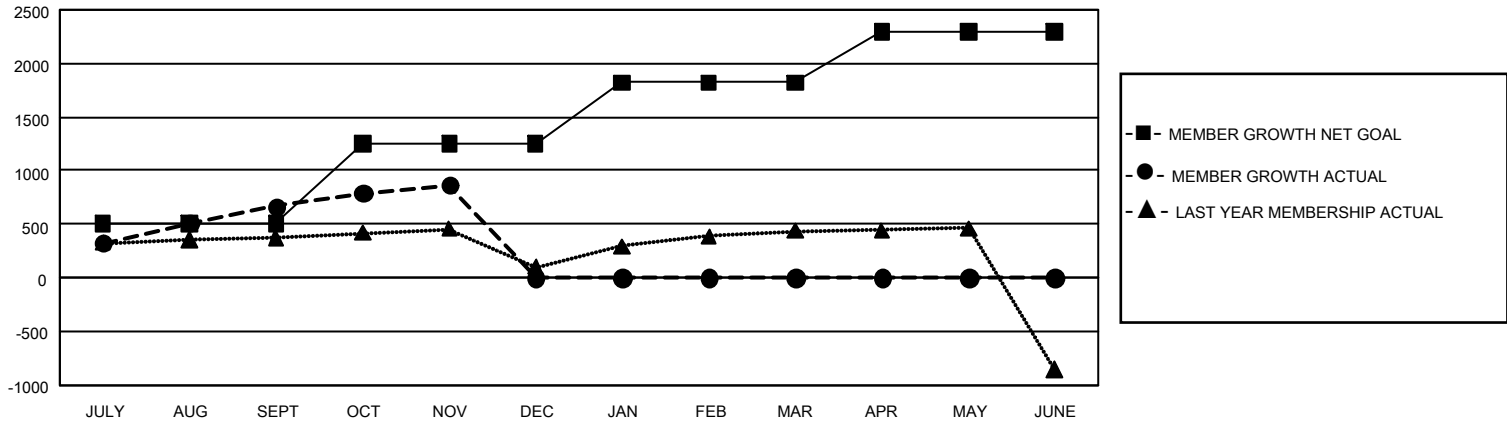
REPORT DOES NOT INCLUDE CLUBS IN UNDISTRICTED AREAS.

Clubs				Members			
RESULTS FOR 2025-2026				RESULTS FOR 2025-2026			
QUARTER	NEW CLUB GOAL	NEW CLUBS	DROPPED CLUBS	QUARTER	MEMBER GROWTH NET GOAL	MEMBER GROWTH ACTUAL	DROPPED MEMBERS ACTUAL (including transfers)
JULY/AUG/SEPT	0	7	0	JULY/AUG/SEPT	507	1,180	443
OCT/NOV/DEC	9	4	0	OCT/NOV/DEC	745	374	157
JAN/FEB/MAR	21	0	0	JAN/FEB/MAR	570	0	0
APR/MAY/JUNE	6	0	0	APR/MAY/JUNE	473	0	0

GOALS AND ACTUAL NEW CLUBS CUMULATIVE



GOALS AND ACTUAL MEMBERS CUMULATIVE



DROPPED CLUBS: 0

437 CLUBS OF 729 ADDED 1 OR MORE NEW MEMBERS

GENDER DISTRIBUTION

MALE	22,790 (75.84%)
FEMALE	7,250 (24.13%)
NON BINARY	0 (0.00%)
PREFER NOT TO ANSWER	9 (0.03%)

DROPPED MEMBERS

DECEASED	88
CLUB CANCELLED	0
OTHER	510
TOTAL	598

[CLICK HERE FOR CUMULATIVE MEMBERSHIP DATA](#)

TOTAL FAMILY UNIT MEMBERS 9,527

FAMILY MEMBERS PAYING HALF DUES 5,246